

# High Performance Driver Education (HPDE)

*Ground School April 23, 2023*



*In Car & Classroom Instruction for Novice to Intermediate, Advanced and Expert Levels*



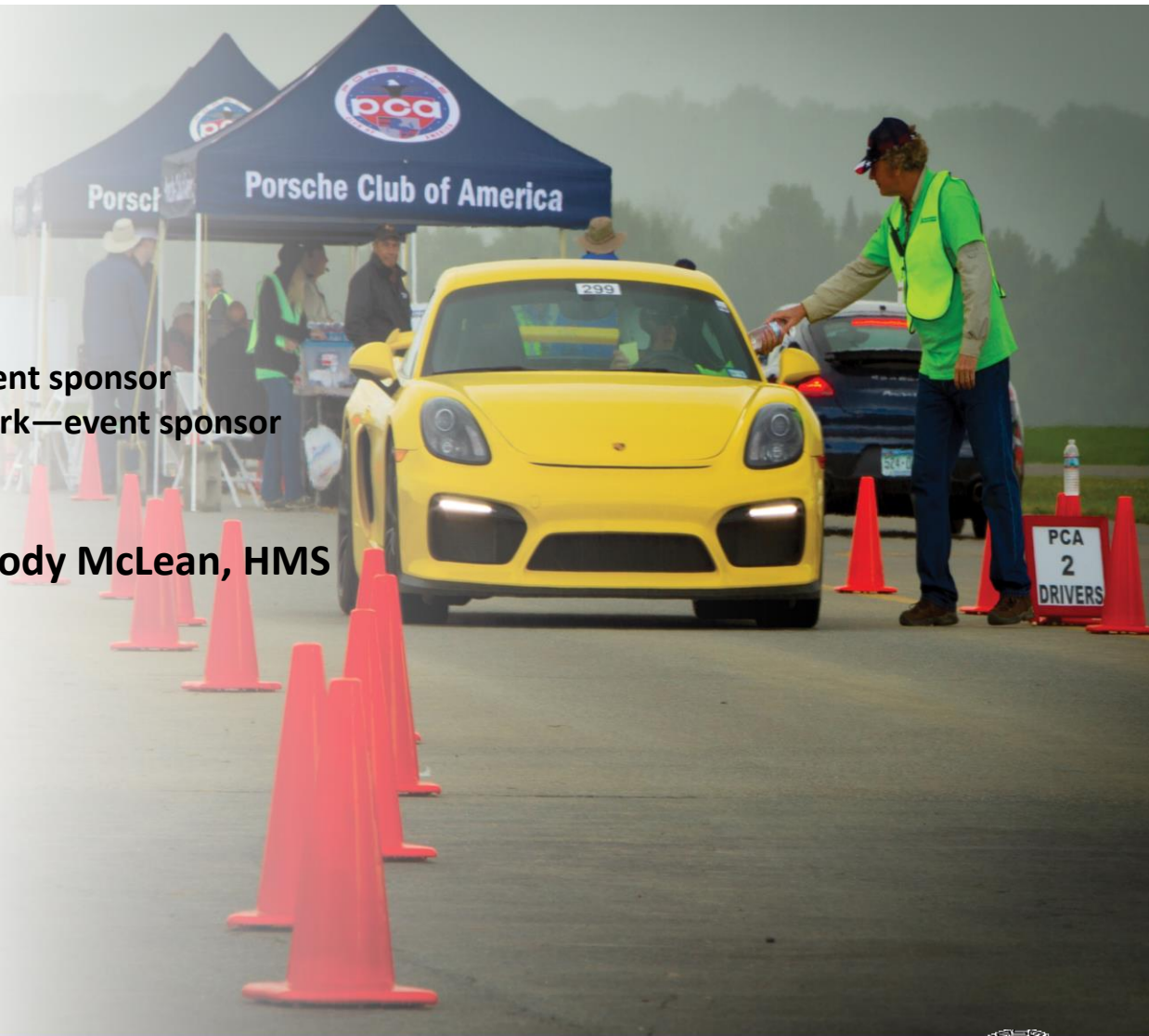
Porsche Club of America

Charlie Kenney, Track Chair, NER



# Agenda

- **Introductions**
  - HMS Motorsports – event sponsor
  - Palmer Motorsports Park—event sponsor
  - NER Track Committee
  - NCR Track Chair
- **Safety & Equipment – Cody McLean, HMS**
- **Driver Education**
  - Mission
  - Benefits
  - Participation
  - Event Info
- **Wrap-up/Q&A/Lunch**
- **Parade Laps**



Porsche Club of America





# NER Track Committee



Charlie Kenney	Track Chair
Adam Schwartz	VP of Contracts
Dave Berman	Chief Instructor
Tom Buckingham	Chief Instructor
Mike Woodward	Chief Instructor
Mathew Wallis	Instructor Development
George Bixby	Instructor Development
Ed Mansing	Novice Development
Kevin Gross	Advanced Classroom
Peter Tracy	Advanced Classroom
Stan Corbett	Registrar, Safety Chair, Chief Scrutineer
Paul Skinner	Co-Registrar
Aaron Murphy	Track Tech Lead
Buzz & Sally Bean	Control Chief & Track Operations
Judi Mansing	Social Committee
Pam Mascetta	Social Committee

**For contact info – see [www.porschenet.com](http://www.porschenet.com)**



# NCR Track Committee



Dennis Mascetta

Robert Jauch

Dave Zrimsek

John Lussier

Dick Demaine

Pam Mascetta

Sally Bean

Gary Gammons

Ed Mansing

Judi Mansing

Margaret Zrimsek

Mark Nadler

Edgar Broadhead

Marcia Binder

Track Chair

Co-Track Chair/Instructor Development

Chief Instructor

DE Registrar

Paddock Reporter

Operations

Operations

Tech Chief

Novice Classroom Instructor

On-site Registration

Social Director

Safety

Safety

Green Zone Coordinator

For contact info – see [ncr-pca.org/](http://ncr-pca.org/)



# NER/NCR Alliance



- Co-marketing of all NER & NCR DE events
  - One region is considered the host for each event
  - Registration & event managed by host region
- Common DE goals and philosophy
- Expanded expertise
  - Event planning & management
  - Improve already-successful DE programs
- Identical instructor development program
- Identical run group advancement policy



# Who runs these events

- PCA Volunteers
- DE Chair — organizes the event
- CI Chief Instructor — manages all the on-track activity.
- A lot of coaches to help you learn to drive better and thus, go faster



Porsche Club of America





# Driver's Education Mission

- The mission and purpose of PCA's DE Program is to provide a safe, structured and controlled teaching and learning environment.
- The PCA DE Program is designed so that participants can improve their driving abilities and acquire a better understanding of vehicle dynamics and driving safety.
- Participants experience first-hand the capabilities of high performance automobiles in a controlled, closed-course environment and acquire skills that will enhance safer vehicle operation in all driving situations.



# What You'll Learn

- The proper line around the track
- Braking, shifting & cornering techniques
- Vehicle dynamics and car control
- Proper use of vision
- On-track awareness, safety & courtesy
- Intuitive & counter-intuitive behavior
- You and your car's capabilities





# DE Driving Benefits



- Self-paced learning & advancement
- Apply what you learn to daily driving
- Better anticipation & observation skills
- Improved focus
- More confidence = More control
- Meet people with a common passion
- Safe & fun!

# Who attends DE's?

- Drivers wanting to enjoy the performance of their car in a safe and controlled environment.
- Drivers wanting to be better drivers on the road in various driving conditions.
- Drivers want to get into various competitive high performance driving events like time trials and club racing.
- Drivers that want to learn more about the technology of their cars



- Drivers that want enjoy their cars with some friends — new and old.



Porsche Club of America





# More Driving Benefits...



- Improve daily driving
  - Car control
  - Situational awareness
- Gain a respect for speed
- Learn high-performance driving skills
- Enjoy a challenging and rewarding experience
- Do what most drivers only dream of doing!



# DE Social Aspects

- Meet people with a shared passion
  - Diverse backgrounds
  - Close friendships will develop
- Interesting destinations in US & Canada
- Non-driver/family activities (day/evening)
  - Recreational (water, cycling, fine dining)
  - Tourist (museums, wineries, historic sites)
  - Shopping
- Evening activities
  - Trackside socials
  - Dinner, cocktails, discussions...



## **FAQs:** **Its too hard on my car**

- All Porsches are made for high performance driving, as well as many other marques.
- You will mostly consume tires and brake pads — and these will last for more than one DE weekend.
- Many high mileage participants — older Porsches are very comfortable and very capable on track.



**Porsche Club of America**





# What DE is not



- Not racing
- Not preparation for racing
- No times or places are recorded
- No awards or prizes are presented
- Not dangerous – but it is serious!
- Can become addictive...



# DE Event Overview

- Event registration; average cost \$275-\$300/day depending on venue
- **50% Discount First Time First Event**
- Pre-event tech inspection
- Daily trackside safety inspection
- Driver's meeting every morning
- Drivers grouped by DE experience
- (4) – 20-30 minute track sessions daily
- Social end of first day at most events



# Who Can Participate?



- 18 years old or older
- Valid driver's license
- Current member of PCA or other recognized car club (such as BMWCCA)
- 2 drivers can share one car
  - Each driver in a separate run group





# What Can You Drive?



- Your Porsche, of course
- NER & NCR allow non-Porsches
  - Other PCA regions may be Porsche-only or have other region-specific rules
- Cabriolet/Convertible Cars:
  - Most cars delivered with factory installed roll over protection meet the minimum standards for PCA DE events
  - If a car does not have factory installed roll over protection, a roll bar or roll cage must be installed which meets the "broomstick" rule.
  - Some tracks have additional requirements
- Most tracks have dB (noise) limits – a modified exhaust may not be acceptable



# Safety Equipment



- Helmets & accessories
- Shoes & gloves
- Seats & harnesses
  - 4-Point harnesses specific to your car
  - Head & neck restraints mandatory with multipoint harnesses (PCA National requirement as of 2019)
- Roll bar / cage
- Fire extinguisher & bracket



# Types of cars

- All makes and models are welcome
- Convertibles with factory roll over protection are acceptable
- Must pass a safety inspection to ensure all aspects of the car are safe at high speed.
- No changes, modifications, or upgrades required — your car is plenty capable as is to handle the track. In fact, we prefer you not start out on racing rubber.



Porsche Club of America





# Pre-event Activities



- Registration and payment
  - Registration for NER events opens March 1st
    - NER event info - [www.porschenet.com](http://www.porschenet.com)
    - NCR event info - [www.ncr-pca.org](http://www.ncr-pca.org)
- Helmet required (Snell 2015 or 2020 approved)
- Pre-event tech inspection by an approved inspector
  - Details & Tech Forms available on our web sites
- Clothing, food & drink
  - Long pants and long-sleeved shirts (natural fiber)
  - Comfortable shoes with non-slip soles
  - Eat lightly
  - Stay hydrated
- Info packets emailed to all participants



# Event Day Activities



- Check-in
  - Sign waivers, receive run group wristband and additional event info
  - Proceed to paddock or garage area (depending on venue)
- Trackside tech inspection
  - Remove any loose objects, including floor mats
  - Affix assigned car numbers (you must provide)
  - Go thru tech line (take helmet & completed tech form)
  - Receive final tech inspection sticker
- Driver's Meeting
  - Safety, rules, schedule, etc.
- Drivers grouped by DE experience
  - Talk to your instructor before going on-track for your first run
- Four 20-30 minute on-track sessions per group
  - Max # of cars in a run group dependent on length of track
- Work assignments - assignments vary by track
  - Tech line, control, staging, pit-out, & others



# Typical Schedule

Day 1	Start	Finish	Running	Start	Finish	Run	Stage	First Call	Second Call
Registration	7:00AM	8:15AM	Stage	8:50AM	9:00AM		Red	8:50AM	8:56PAM
Tech Line	7:10AM	8:15AM	Red	9:00AM	9:21AM	21min.	Black	9:11AM	9:16AM
Driver's Mtg	8:15AM	8:30AM	Black	9:221AM	9:42AM	21min.	Yellow/Blue	9:32AM	9:37AM
Novice Mtg	8:30AM	9:15AM	Yellow/Blue	9:42AM	10:03AM	21min.	Green	9:53AM	9:58AM
Instructors	8:30AM	8:45AM	Green	10:03AM	10:24AM	21min.	White	10:14AM	10:19AM
Meeting			White	10:24AM	10:45AM	21min.	Red	10:35AM	10:40AM
			Red	10:45AM	11:06AM	21min.	Black	10:56AM	11:01AM
			Black	11:06AM	11:27AM	21min.	Yellow/Blue	11:17AM	11:22AM
			Yellow/Blue	11:27AM	11:48AM	21min.	Green	11:38AM	11:43AM
			Green	11:48AM	12:09PM	21min.	White	11:59AM	12:01PM
			White	12:09AM	12:30PM	21min.			
			Lunch	12:30PM	1:30PM		Red	1:20PM	1:25PM
			Red	1:30PM	1:51PM	21min.	Black	1:41PM	1:46PM
			Black	1:51pm	2:12PM	21min.	Yellow/Blue	2:02PM	2:07PM
			Yellow/Blue	2:12pm	2:33PM	21min.	Green	2:23PM	2:28PM
			Green	2:33PM	2:54PM	21min.	White	2:44PM	2:49PM
			White	2:54pm	3:15PM	21min.	Red	3:05PM	3:10PM
			Red	3:15pm	3:36PM	21min.	Black	3:26PM	3:31PM
			Black	3:36pm	3:57PM	21min.	Yellow/Blue	3:47PM	3:52PM
			Yellow/Blue	3:57pm	4:18PM	21min.	Green	4:08PM	4:13PM
			Green	4:18pm	4:39PM	21min.	White	4:34PM	4:34PM
			White	4:39pm	5:00PM	21min.			

**Novice  
First-  
Timers  
Receive  
50%  
Discount**



# DE Run Groups



- Green – Beginning DE drivers
- Yellow – Novices, limited DE experience

**Green/Yellow drivers will have an instructor sitting in the right seat**

- Blue – Entry-level solo drivers
- White – Intermediate drivers
- Black – Advanced drivers
- Red – Instructors



# Students & Instructors

- Instructors assigned to all Green/Yellow run group drivers – no exceptions
- Registration fee includes instruction
- All instructors certified by the host region
- Instructor/Student pairings done with forethought
- Same instructor for an entire event
- Different instructor for subsequent events
- Rides with instructors encouraged for solo drivers
- Self-paced instruction & run group advancement





# Driving Evals

- DrivingEvals.com is an on-line system that allows your instructor to record his observations about your driving and you, the student, to evaluate your instructor. This allows the club to track your progress and tailor future instruction to your driving needs.

# **FAQs:** I'm worried about the other guy

- Strict enforcement of rules — monitored by PCA staff, coaches, and corner workers — nothing goes unnoticed.
- Passing rules eliminate the uncertainty of “racing”
- Black flag station for control of non rule followers
- Two spin rule
- Bad attitude rule
- Run groups based on experience and skill.



Porsche Club of America





# 2023 NER/NCR Driver Ed Events

May 8 - 9 (Mon - Tue)	Lime Rock Park, Lakeville CT (NCR)
May 26 - 28 (Fri - Sun)	Thompson Speedway Motorsports Park, Thompson CT (NER)
Jun 9 - 11 (Fri - Sun)	Palmer Motorsports Park, Palmer MA (NER)
Jul 5 - 7 (Wed - Fri)	Calabogie Motorsports Park (NER)
Jul 20 – 22 (Thur – Sat)	Club Motorsports, Tamworth NH (NCR)
Aug 11 - 13 (Fri - Sun)	Watkins Glen International, Watkins Glen NY (NER)
Sep 7 - 9 (Thur - Sat)	Club Motorsports, Tamworth NH (NCR)
Sep 22 – 24 (Fri – Sun)	Palmer Motorsports Park, Palmer MA (NER)
Oct 21 - 22 (Sat - Sun)	NH Motor Speedway, Loudon NH (NCR)

Check [www.porschenet.com](http://www.porschenet.com) or [www.ncr-pca.org](http://www.ncr-pca.org) for event details



# Additional NER Events

- Autocross
- Tours: Ramble, Dow Fall Tour
- Concours
- Cars & Coffee: N'boro, Cape, SoBo
- Newcomer's Meeting
- Guest speakers
- Tech sessions
- Summer Party & Annual Gala

# Know your flags:



## Green

Start of session  
Course is clear



## Yellow

No passing



## Red

Stop on track in a safe and visible location near a flag stand



## Blue w/ Yellow diagonal

"Check your mirrors"

It is likely that people are trying to pass you.

Please let them by when it is safe.



## Yellow & Red Stripes

"Slick"

Be careful of slick condition on track

**SLOW DOWN**



## Black w/ Orange Disc

"Meatball"

Suspected mechanical issue with your car



## Black

Pointed at you:  
**Come in to Grid immediately.**

There may be something wrong with your car or you may have done something wrong



## White

One more lap



## Checker

End of session



Porsche Club of America



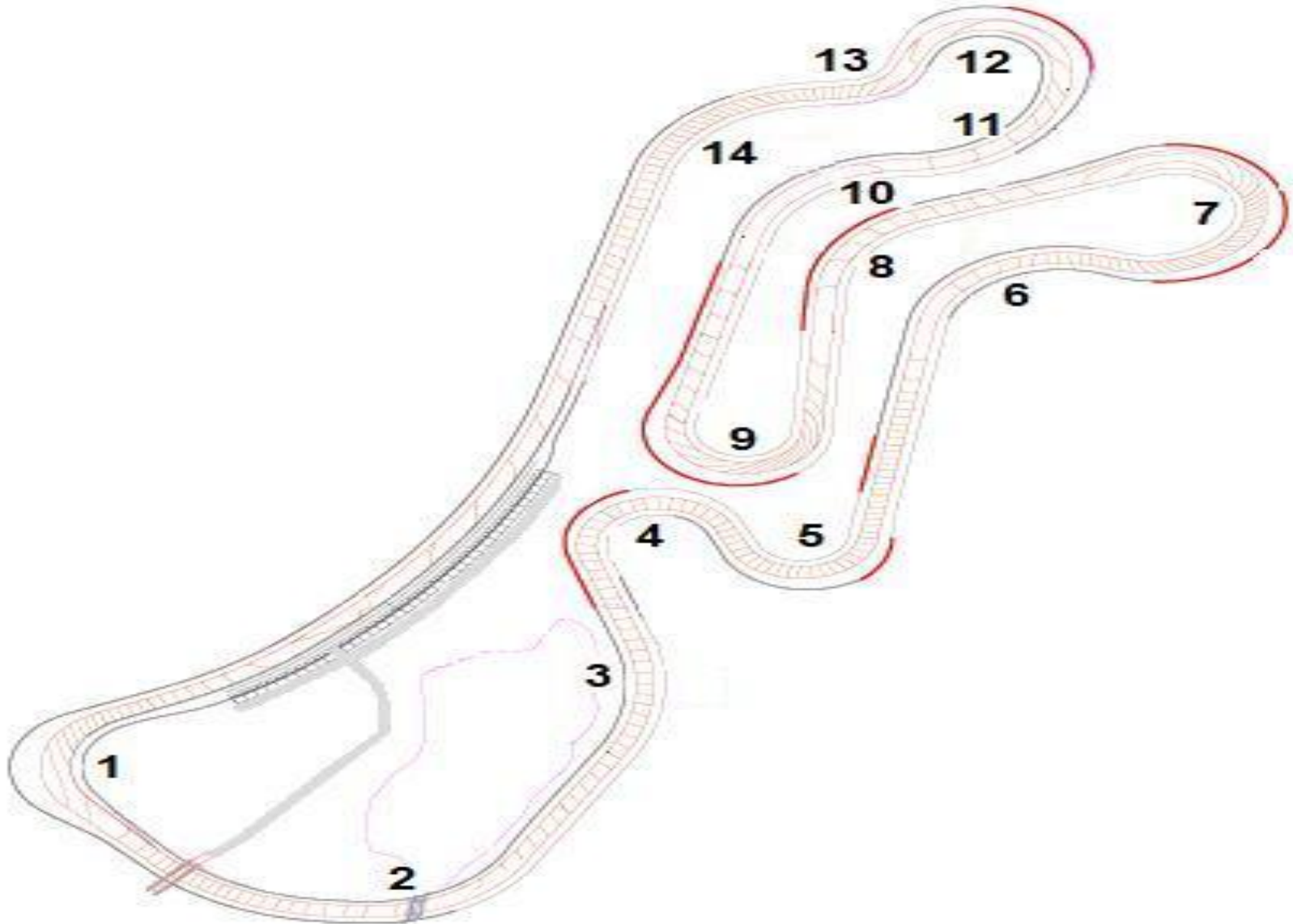


# Palmer Parade Lap Guidelines

- Do Not Damage Yourself, Your car, the Track, or Others
- Small Groups With a Designated Leader
- No Passing
- No Touching
- This is Fun – But it's Also Serious
- Look For the Track Entry to Your Left
- When You Want a Break - Come into Hot Pits
- When You Want to Stop - Come Into Hot Pits, then Paddock
- If You See a Waving Flag, Check Your Mirrors, Slow Down, Come Into Pits, Then Paddock



# Track Map





**Thank you for coming to PCA Drivers' Education.**



**Porsche Club of America**

